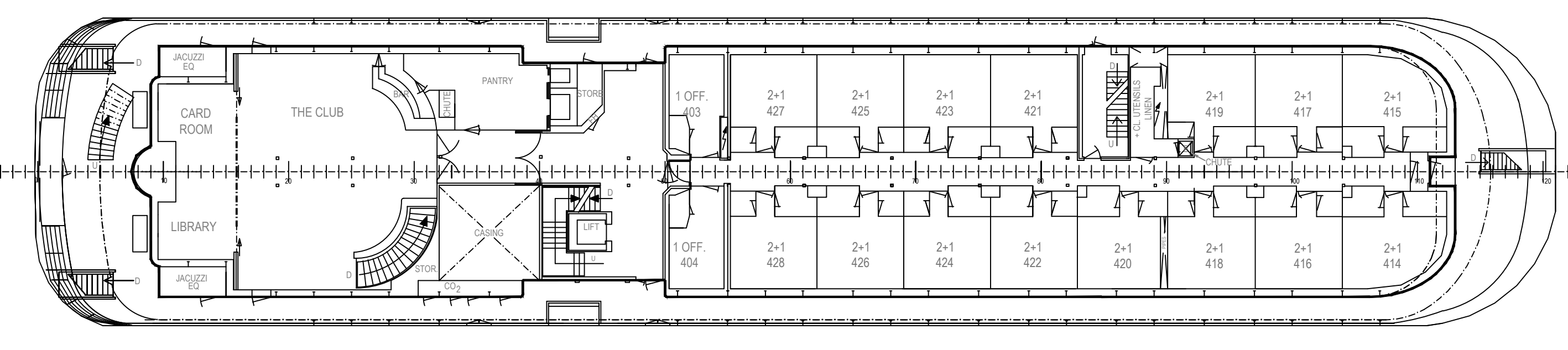
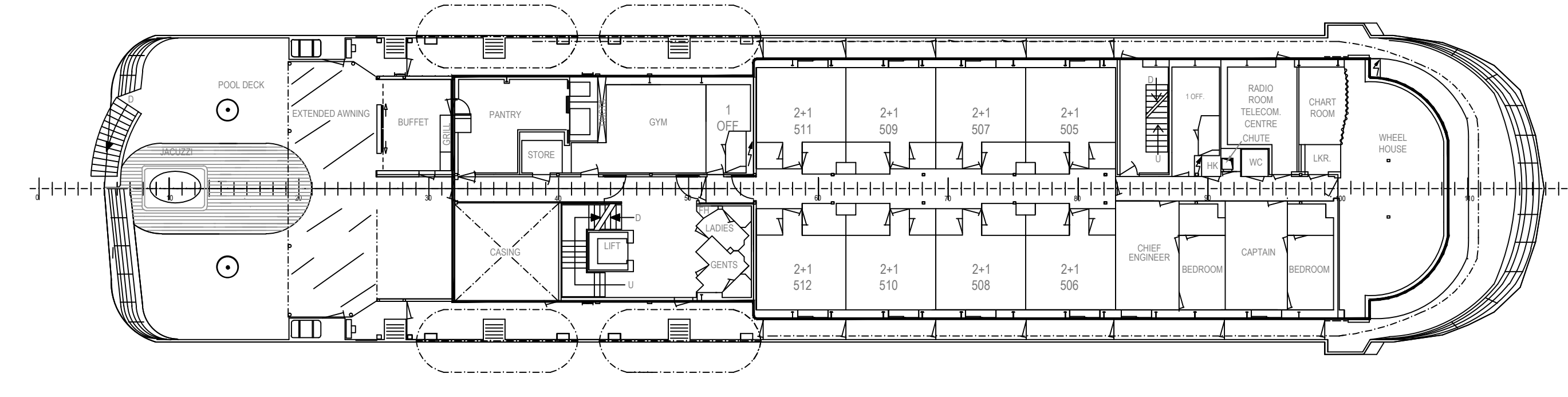
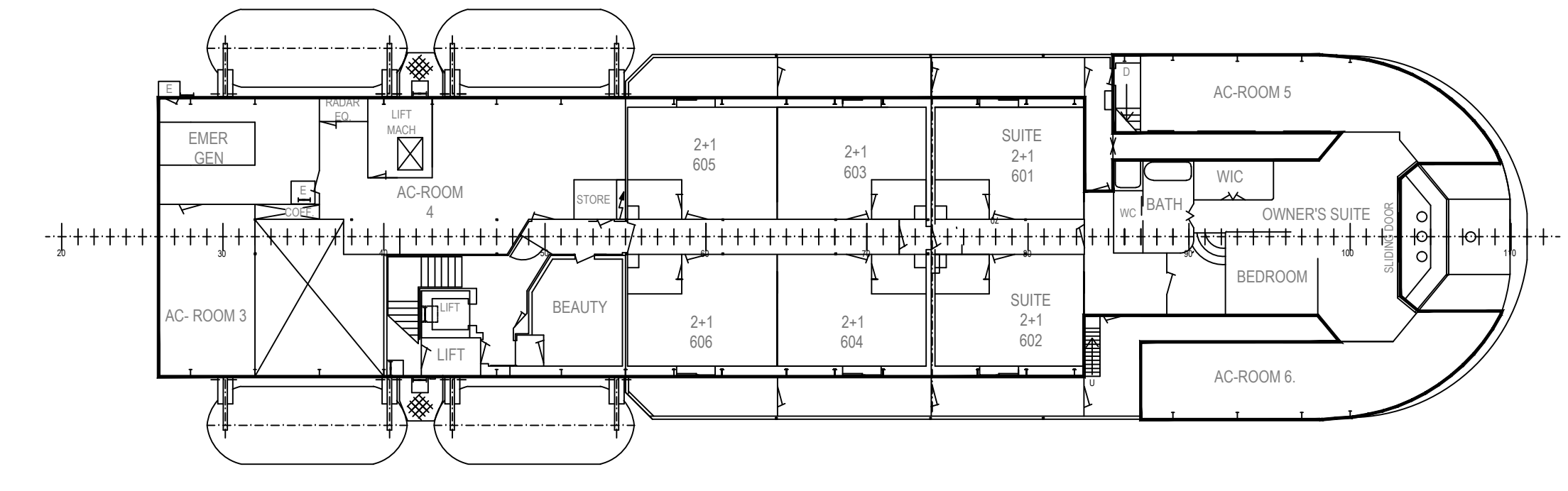
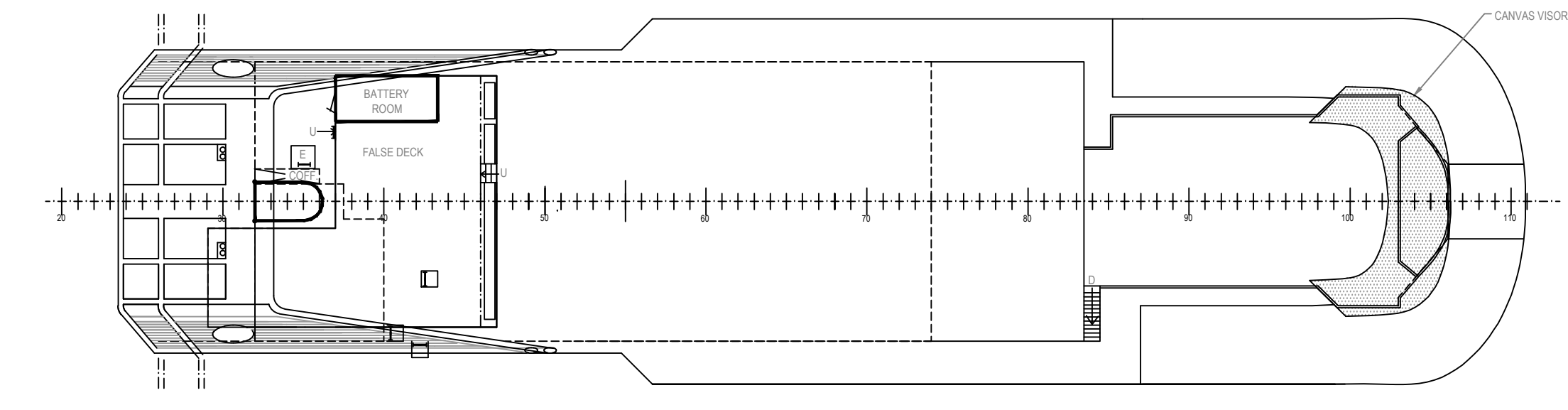
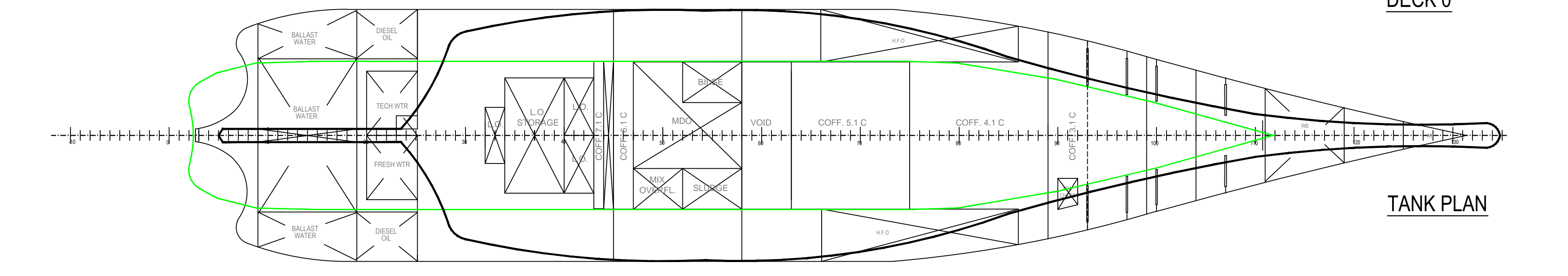
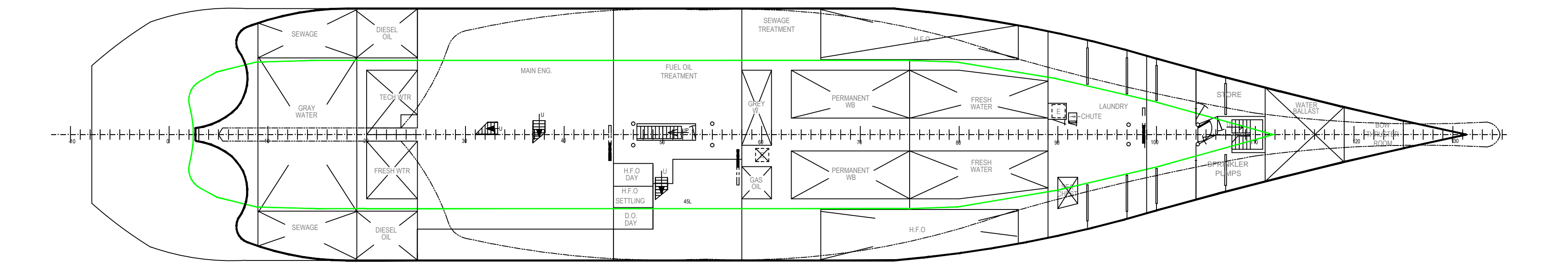
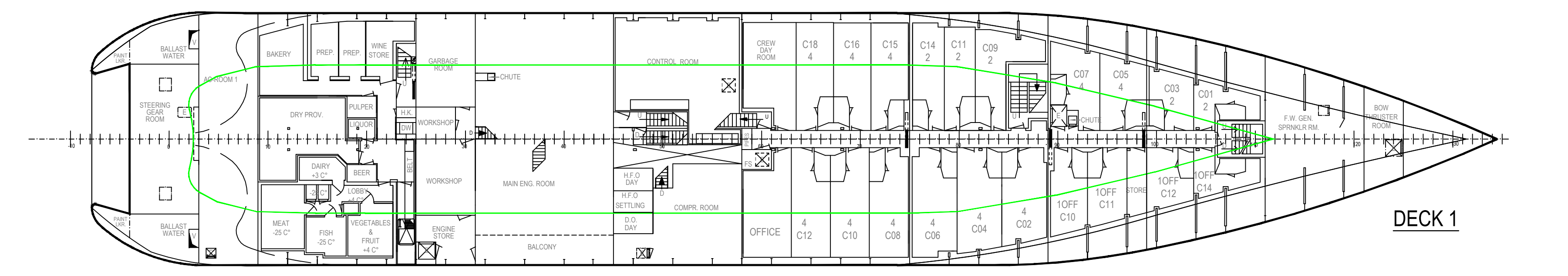
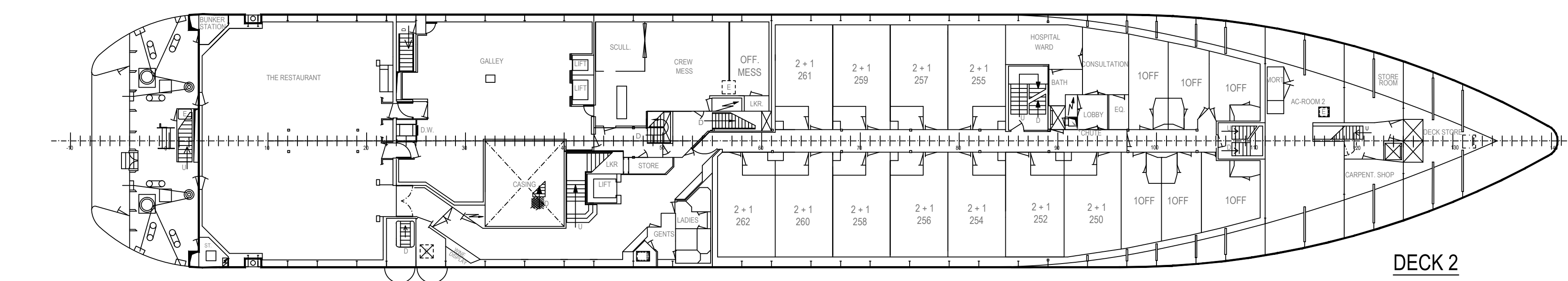
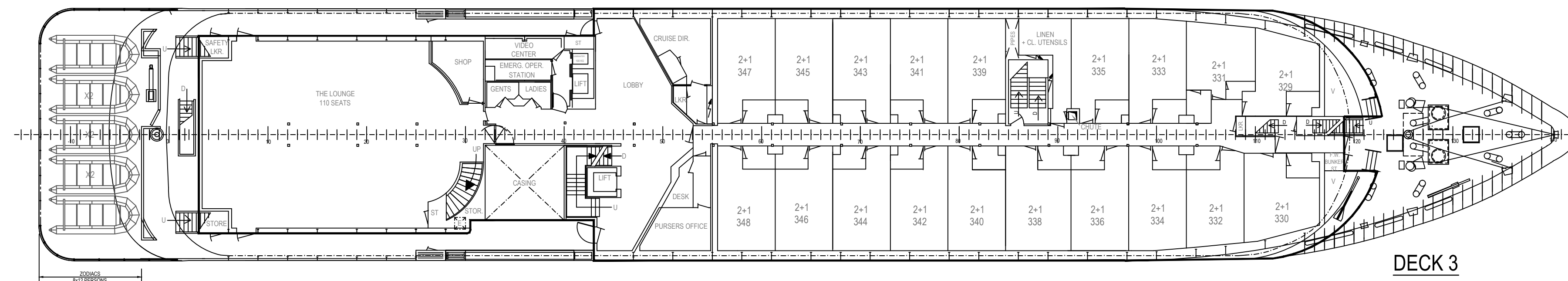
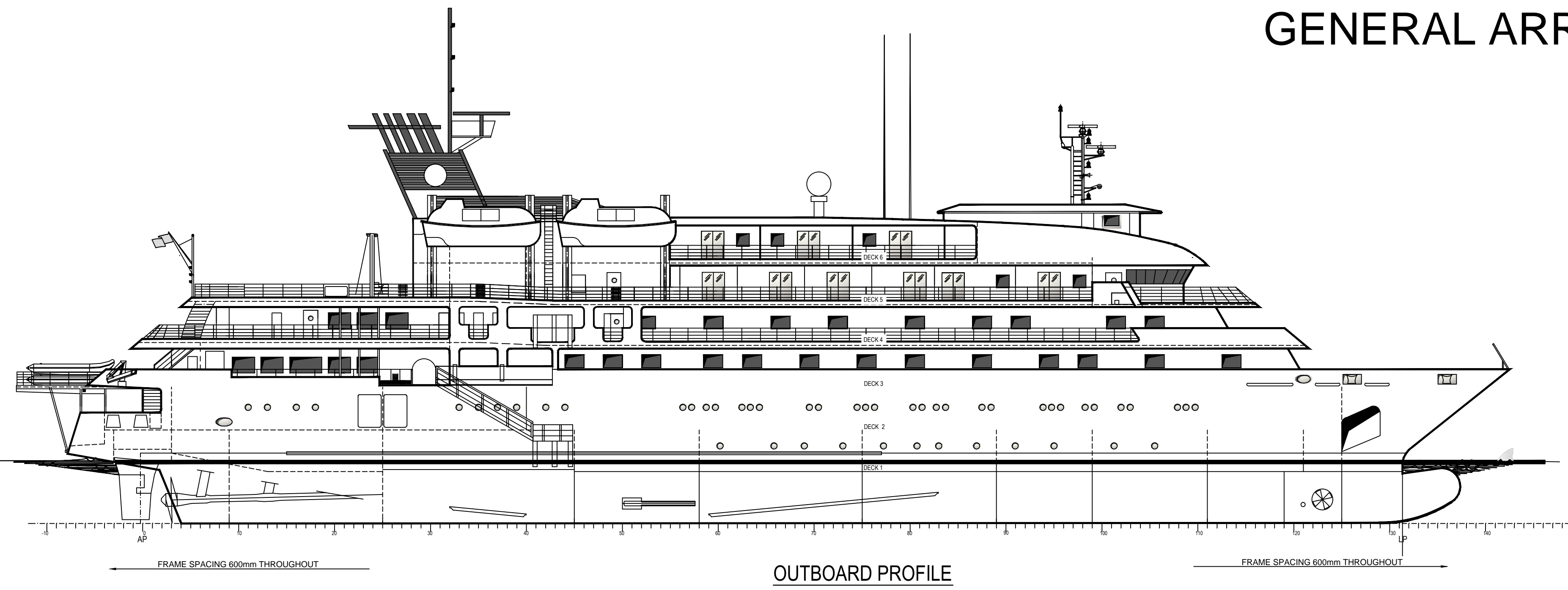


# M/S SEA SPIRIT

## GENERAL ARRANGEMENT



LENGTH OVERALL	90.60 m
LENGTH BETWEEN PP.	78.80 m
BREADTH MOULDED	15.30 m
DEPTH TO BHD DECK	5.85 m
DRAUGHT, DESING	4.20 m
NUMBER OF PASSENGERS	135
NUMBER OF CREW	121

NOTE:  
 KEEL LAYING DATE - 17 DECEMBER 1987  
 ORIGINAL CONSTRUCTION 1974 SOLAS  
 CONVERSION 1985 MINOR CONVERSION TO 1974 SOLAS  
 AS AMENDED 81, 83, 89  
 BALCONIES AS LATER AMENDED  
 1992 AMENDMENTS IMPLEMENTED PRIOR TO OCT 1997

BUILT TO SOLAS 1974 + AMENDMENTS 81 & 83 & 92  
 REGISTRY ITALIANO MARILE  
 COAST GUARD REGULATIONS FOR FOREIGN SHIPS  
 DESIGN HISTORY:  
 KEEL LAY 17 DECEMBER 1987  
 ORIGINAL CONSTRUCTION 1974 SOLAS  
 CONVERSION 1985 MINOR CONVERSION TO 1974 SOLAS AS AMENDED 81, 83, 89  
 BALCONIES AS LATER AMENDED  
 1992 AMENDMENTS IMPLEMENTED PRIOR TO OCTOBER 1997  
 CONVERSION 2005:  
 1. ADDED THREE NEW STATE ROOMS ON DECK 6.  
 2. INSTALLED 43.6 METRIC TONS OF MAGNETITE/HEMATITE SOLID BALLAST IRT COFFERDAM 5.1.  
 3. INSTALLED 7.11 METRIC TONS LEAD BALLAST IN COFFERDAM 7.1 BETWEEN FRAME 43 AND 45.  
 4. ADDED WTB AND DOOR ON FRAME 99.  
 CONVERSION 2006 - FO & FW TANK MODIFICATIONS.

B	REVISED PER SHIP	Jan. 27, 2011
A	UPDATED	Nov. 29, 2010

**ZWISH-ZWISH** Ship Design Solutions  
 ANNIKA & GUNNAR STROMBERG INC.  
 10064 NW 4th STREET PLANTATION, FLORIDA 33324  
 PHONE: (954) 472-8812 FAX: (954) 472-0039  
 E-MAIL: stromberg\_a@bellsouth.net

M/S SEA SPIRIT  
 GENERAL ARRANGEMENT

Scale: 1:200 (SeB) Dwg. NO: 524 - 100  
 Date: October 25, 2010 REVISION REV. B - Jan. 27, 2011